

Could doughnuts turn out to be good for us?



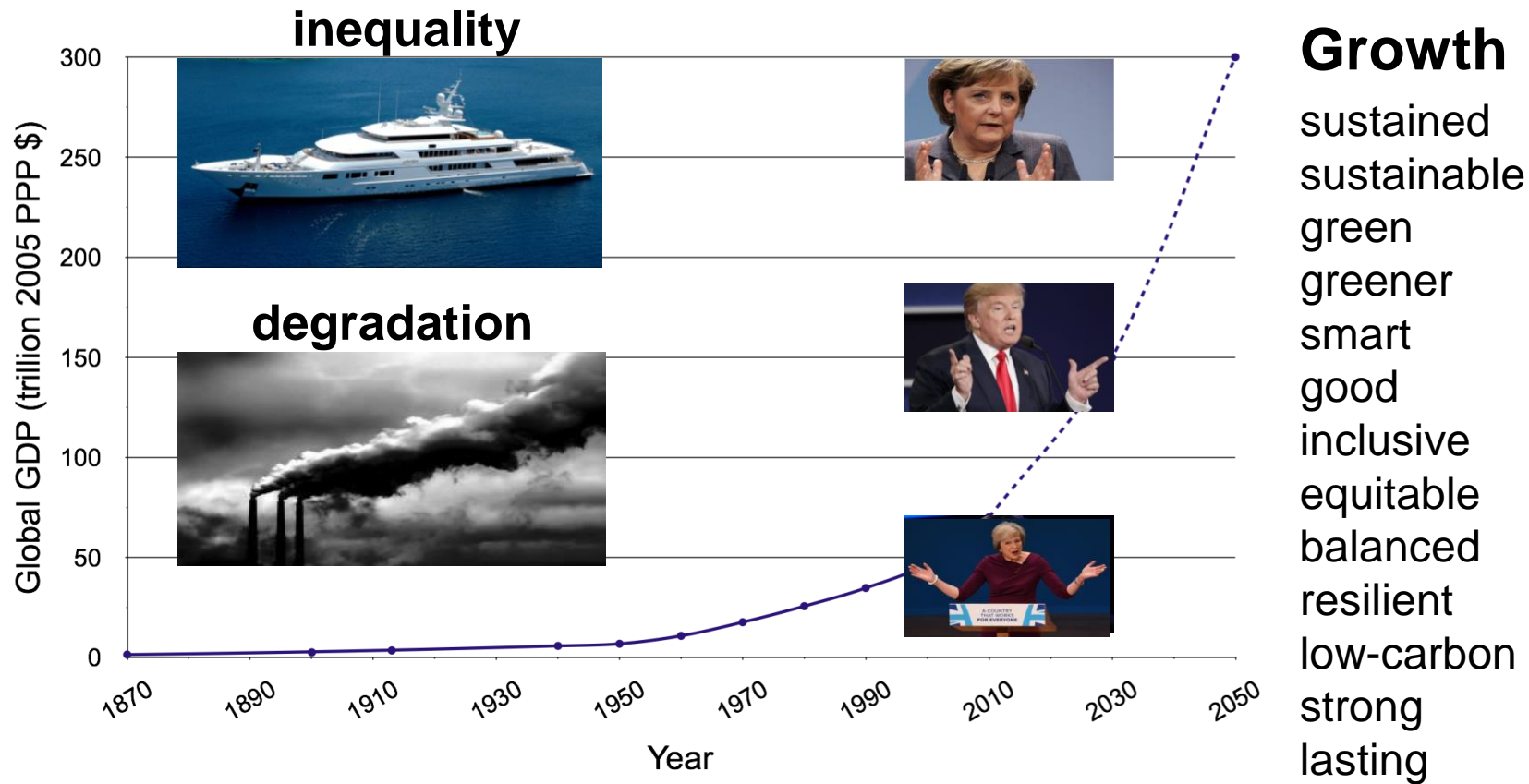
Kate Raworth
Senior Visiting Research Associate
Environmental Change Institute, Oxford University

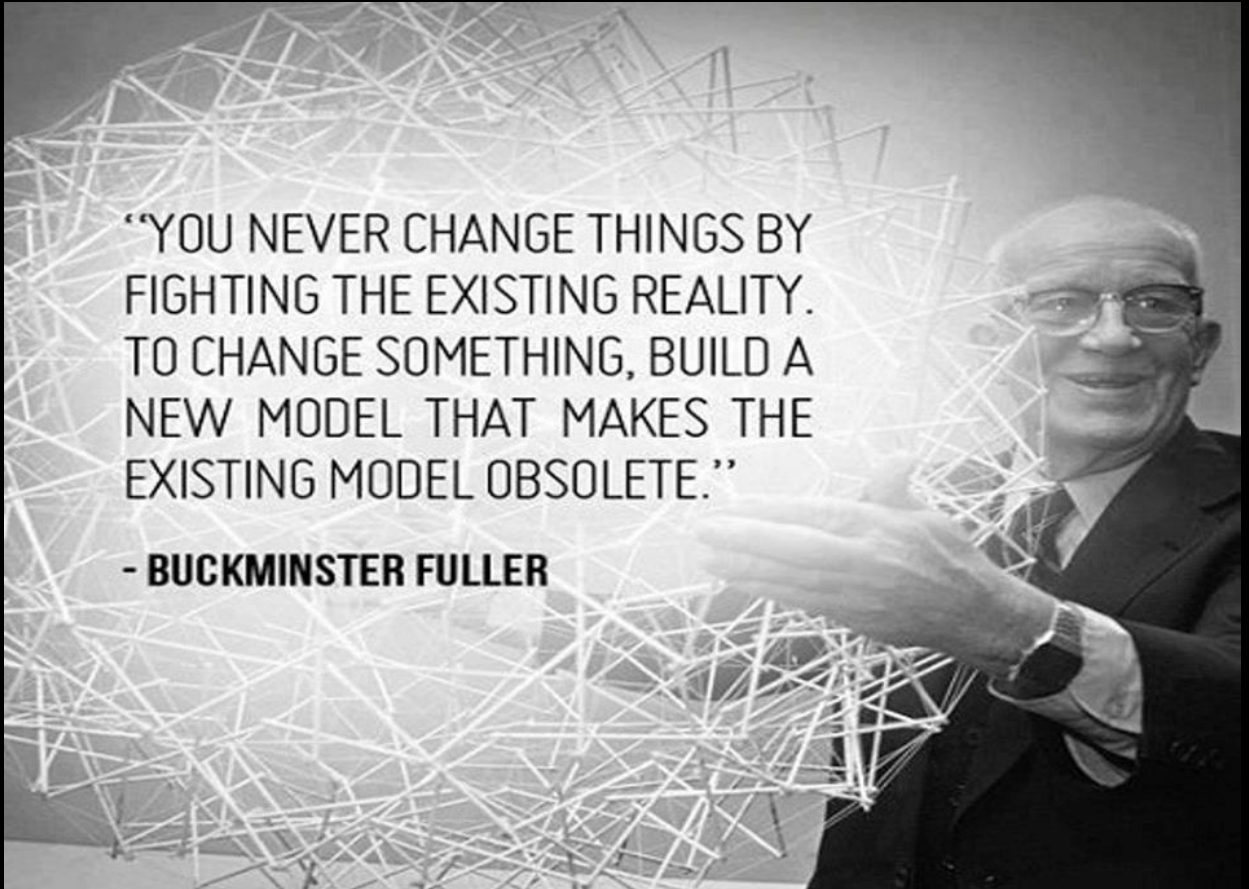


@KateRaworth

Medact, 9 December 2016

The 20th century shape of progress

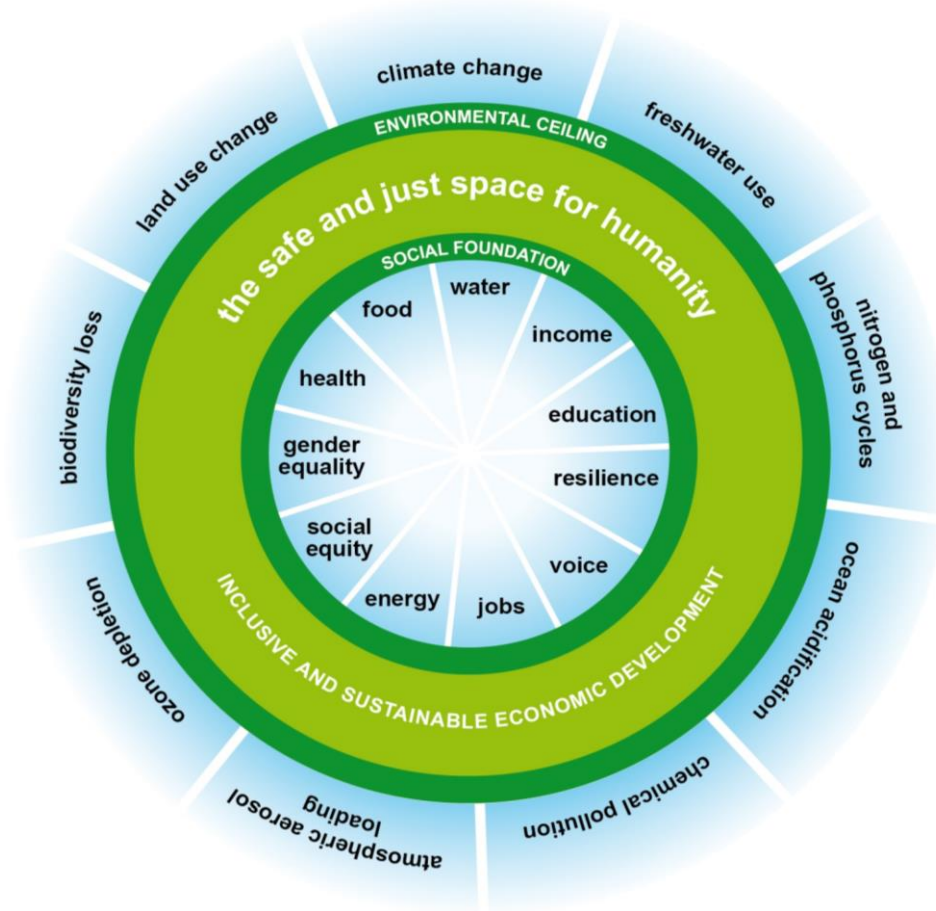




“YOU NEVER CHANGE THINGS BY
FIGHTING THE EXISTING REALITY.
TO CHANGE SOMETHING, BUILD A
NEW MODEL THAT MAKES THE
EXISTING MODEL OBSOLETE.”

- **BUCKMINSTER FULLER**

A safe and just space for humanity





Understanding the human body
France, 14th century

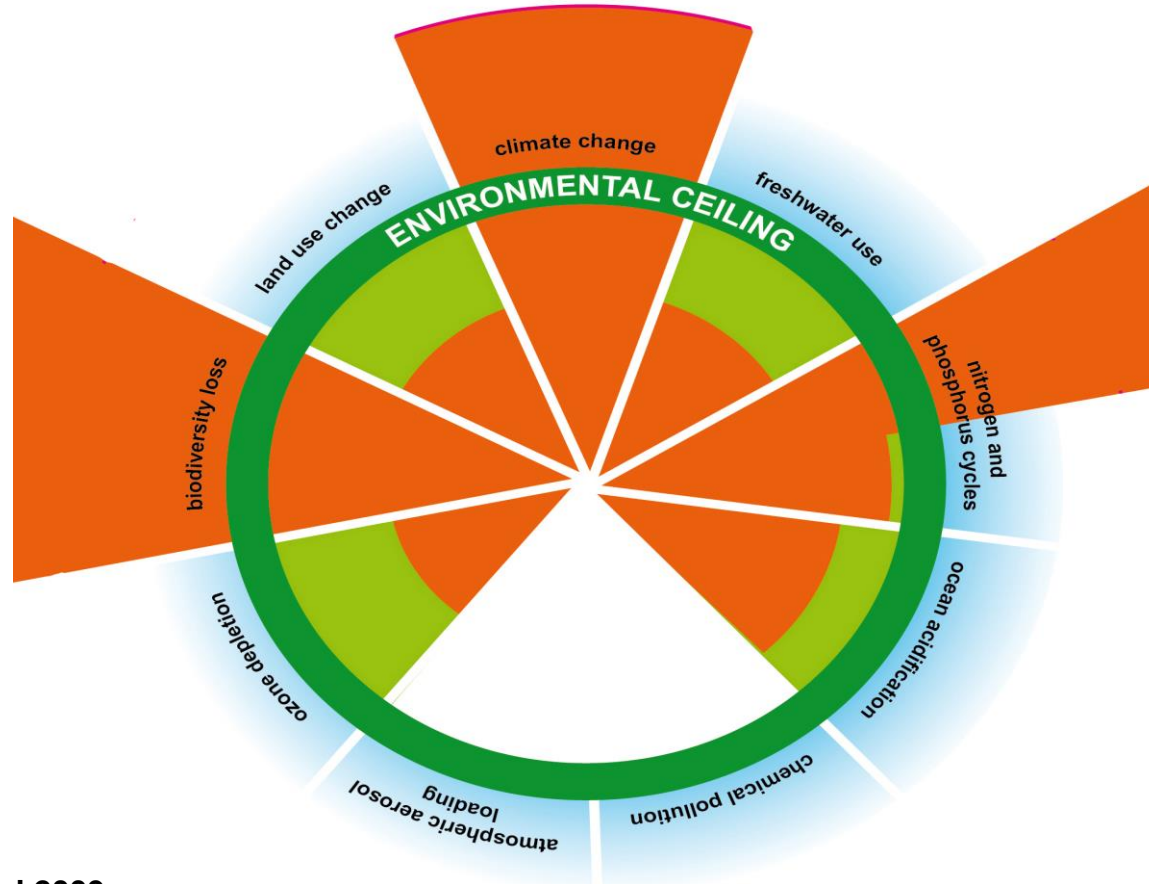


Understanding Planet Earth
Everywhere, 21st century



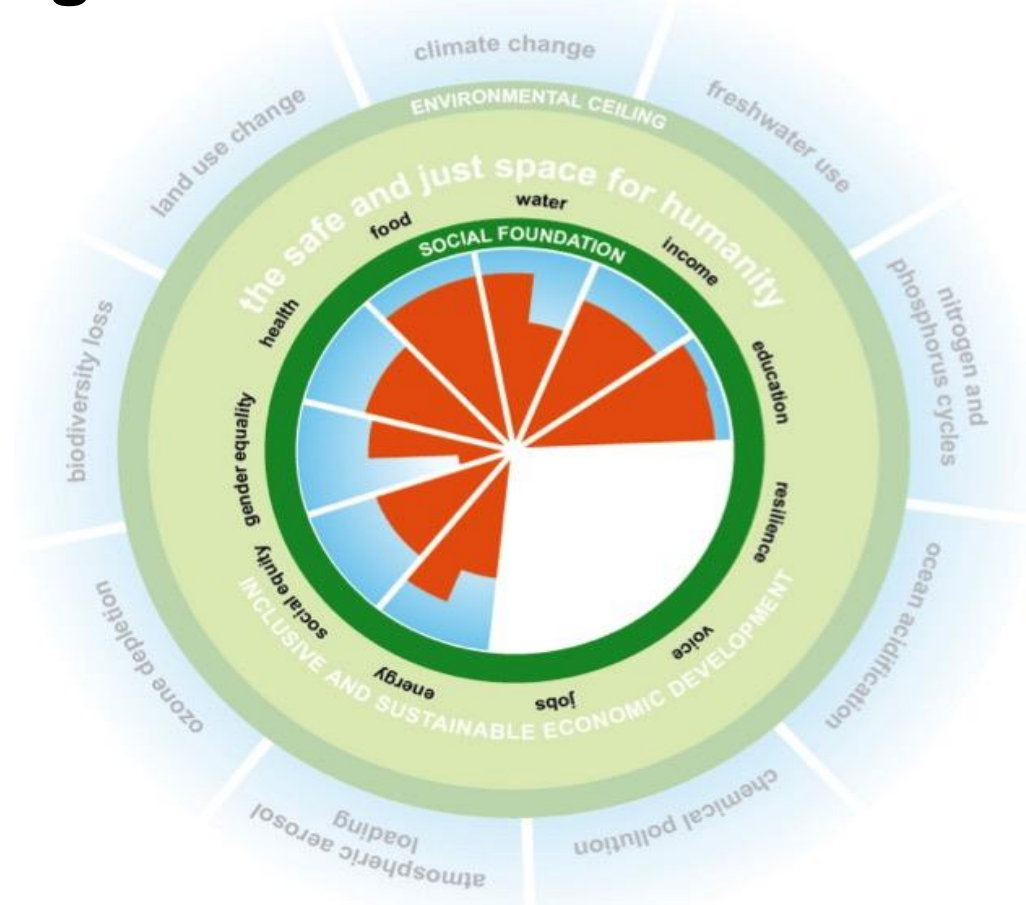
Rockström,
Steffen, et al
(2009)

Overshooting planetary boundaries

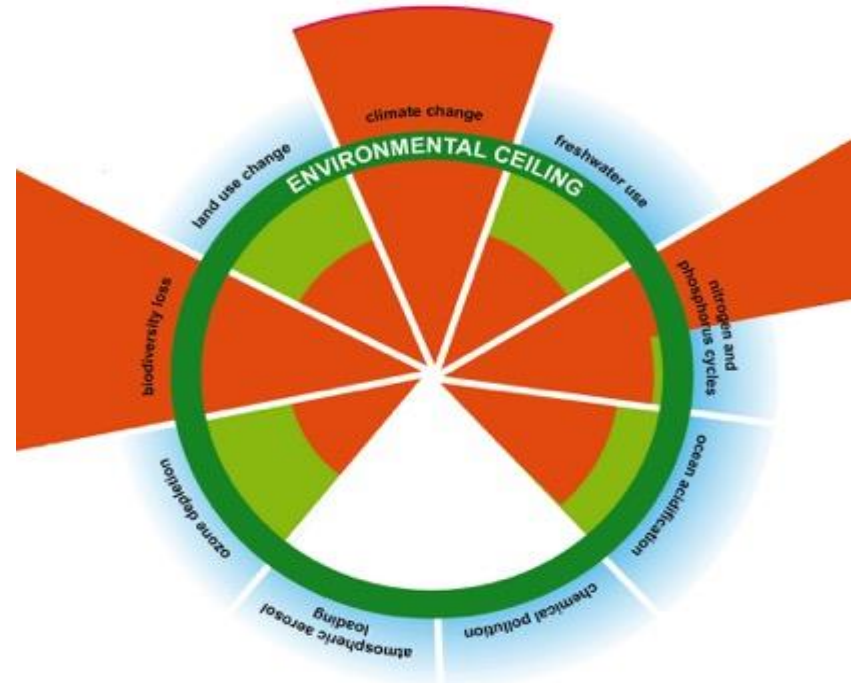
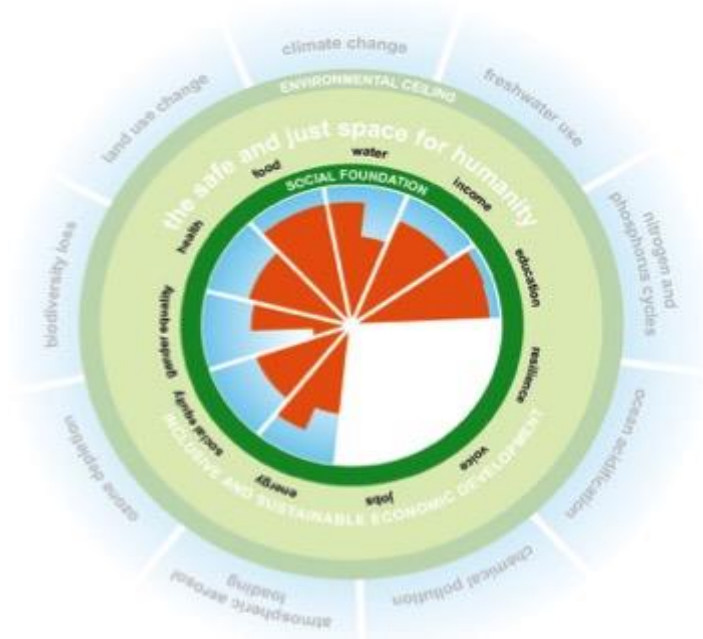




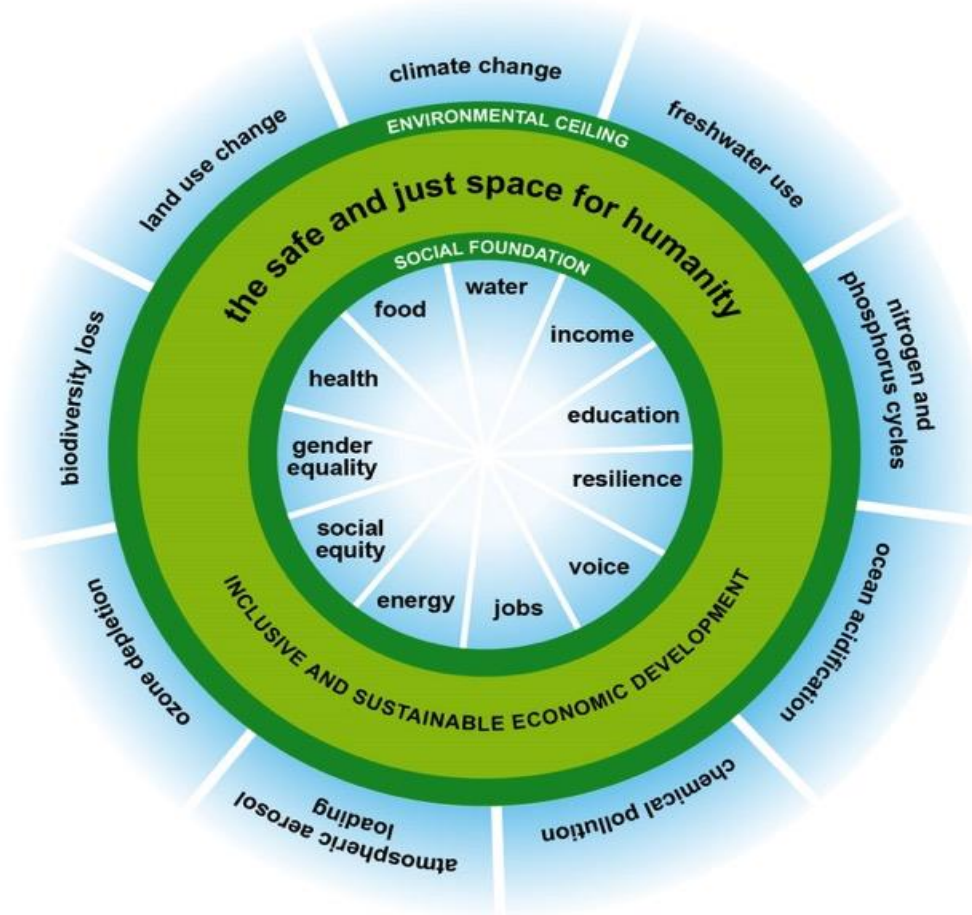
Falling short on the social foundation



The 21st century: beyond the boundaries – on both sides



Humanity's 21st century challenge









Kokstad, KwaZulu-Natal

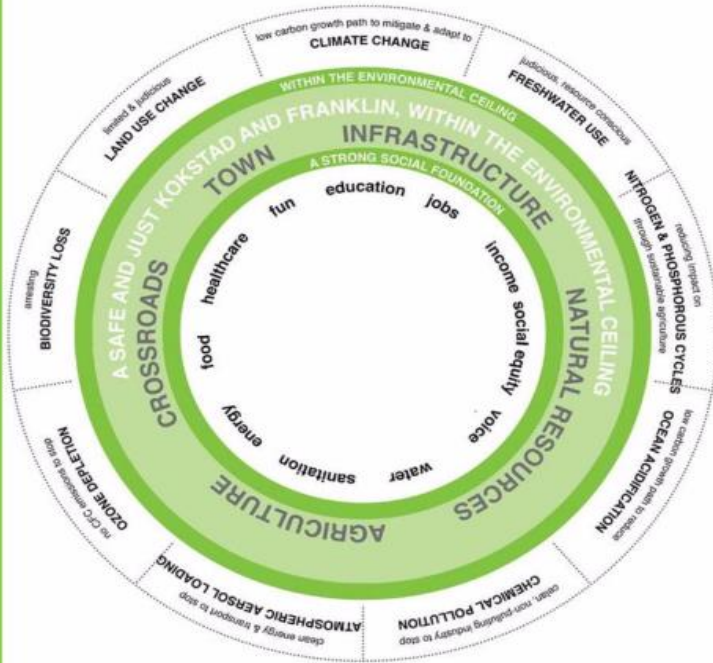


FIG. 2. THE SAFE AND JUST SPACE FOR HUMANITY

The stories for Kokstad within the safe and just space for humanity.

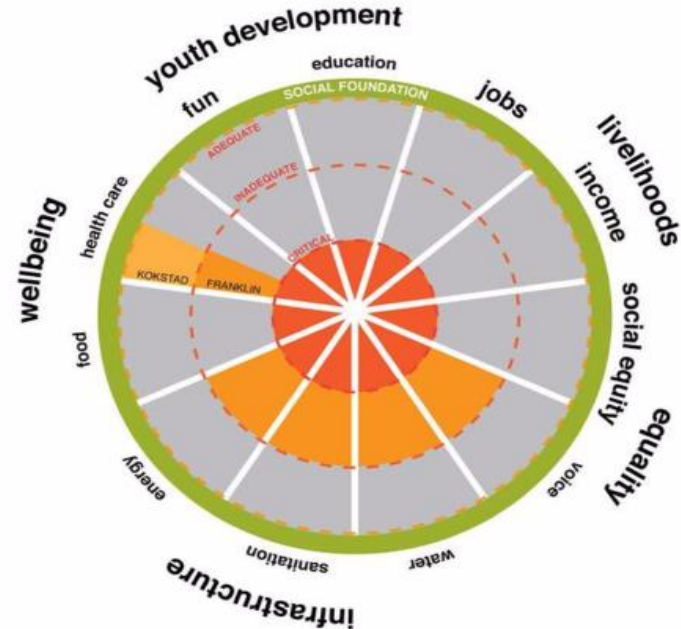
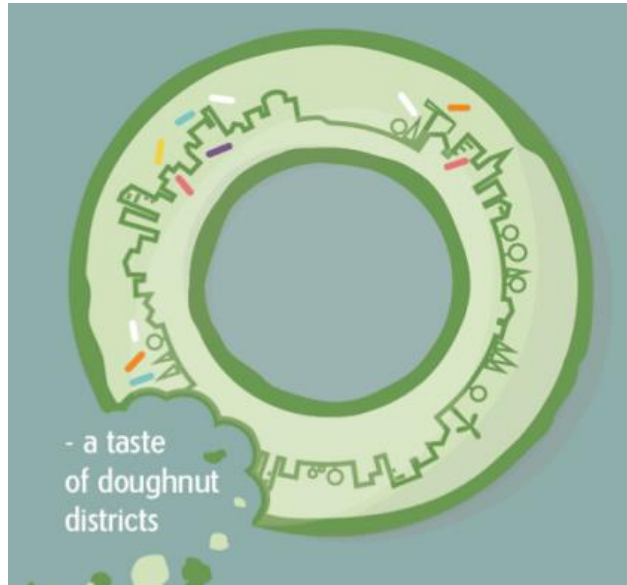


FIG. 3. SOCIAL FOUNDATION

An assessment of the 'social foundation' of Kokstad using the categories from the Oxfam model; each dimension is described as either critical, inadequate or adequate, according to the findings from the status quo report and feedback from the status quo workshop during May 2012. (adapted from Oxfam categories)

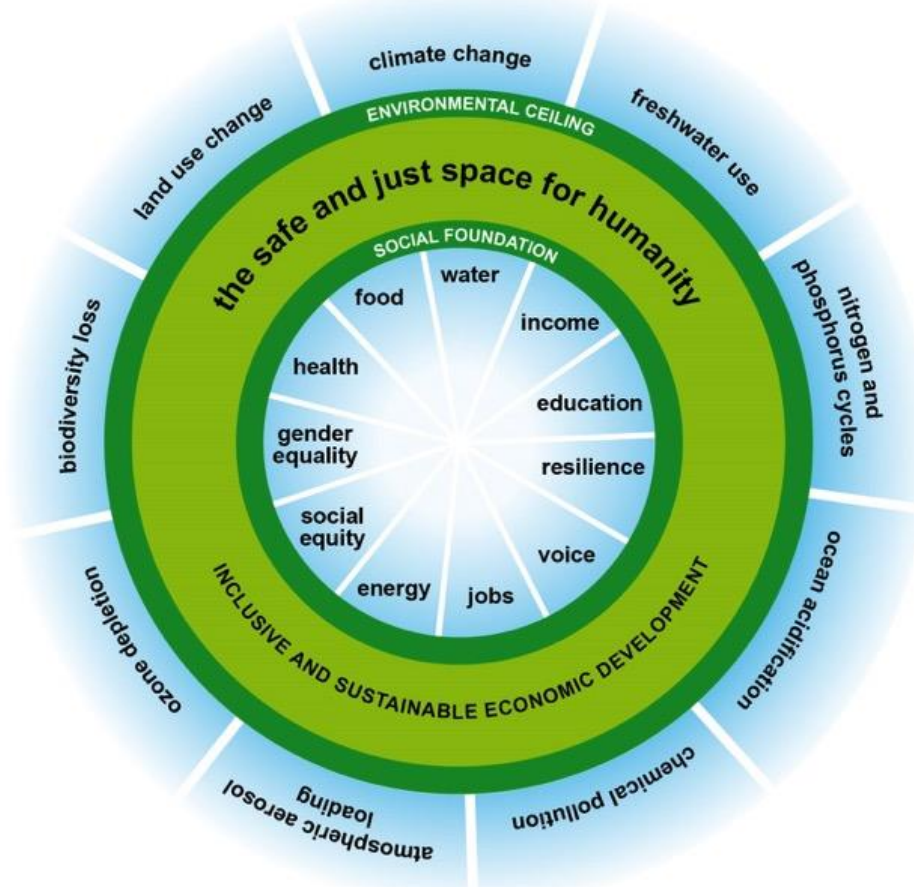
Kymlinge, Stockholm

‘creating the most sustainable city districts in the world’



urban minds

What key factors shape humanity's ability to move into the safe and just space?



Can we live within the Doughnut?

Aspiration

Education

Governance

Inequality

Population

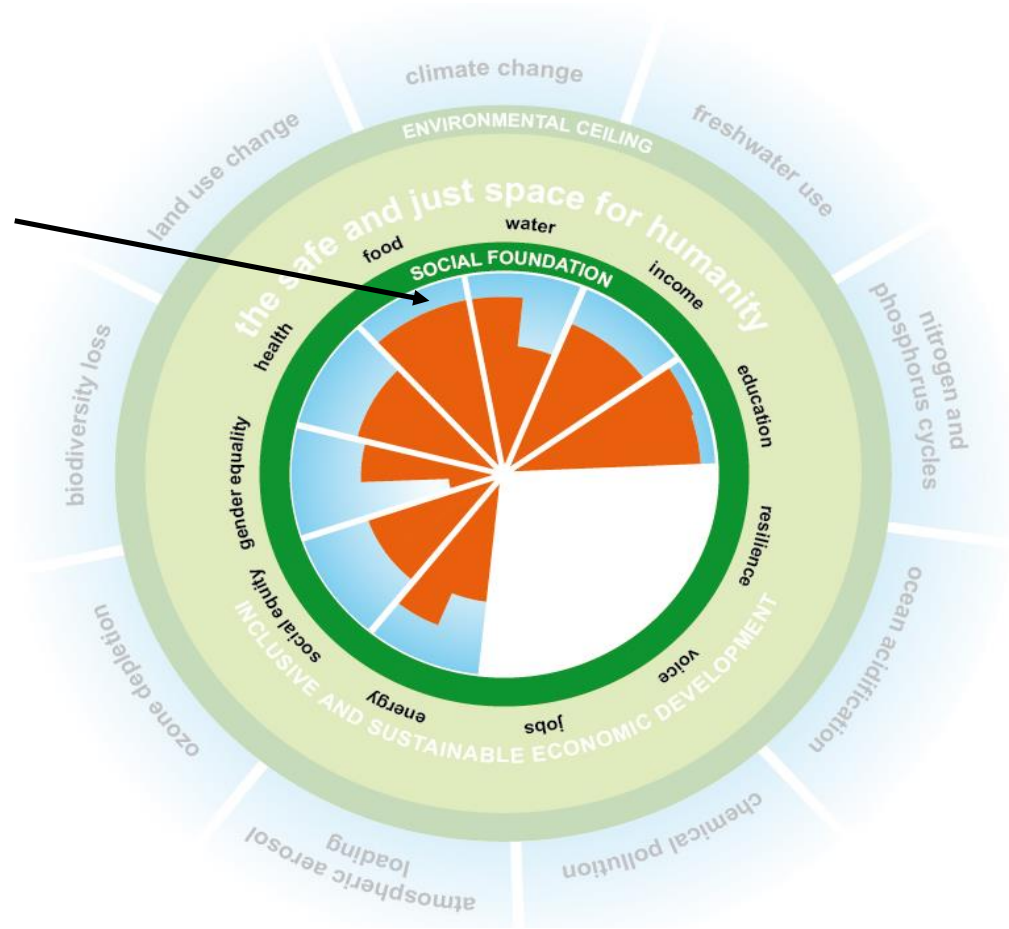
Technology



INEQUALITY

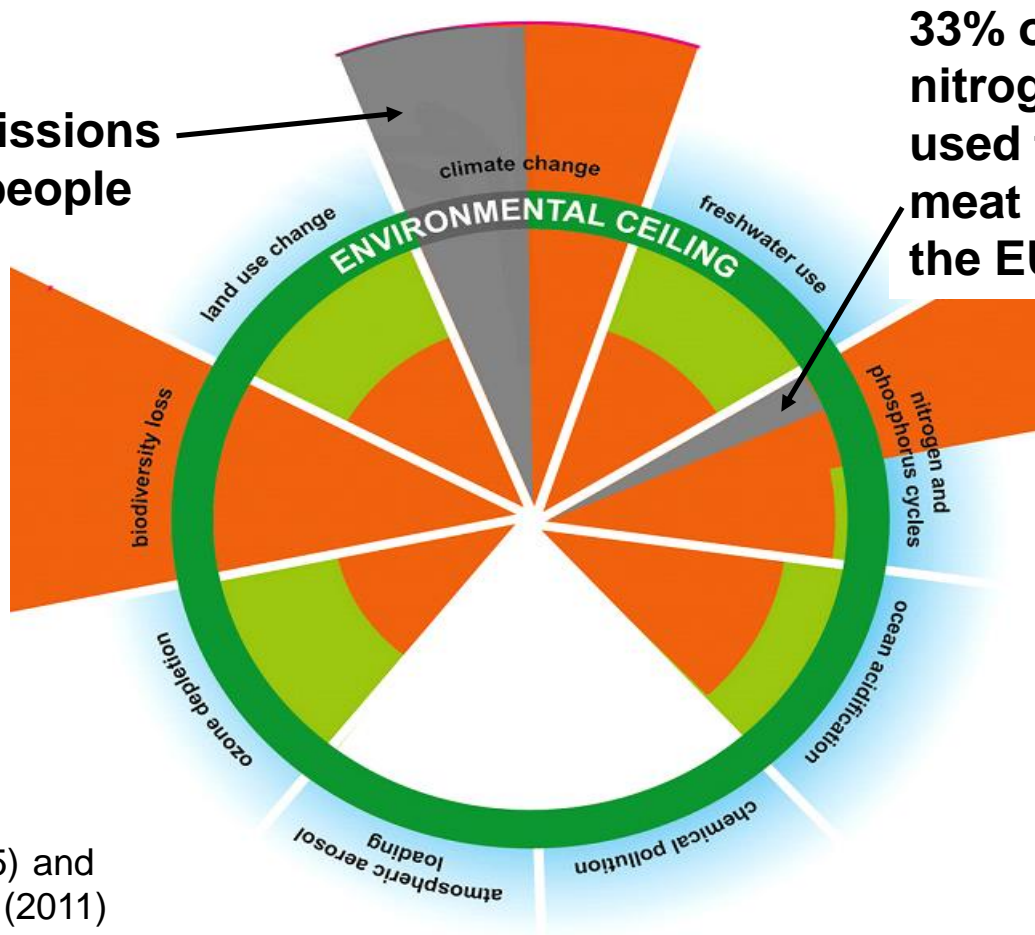
**To end hunger for all:
3% of global food supply**

**30-50% of the global
food supply is lost,
wasted or thrown away**



INEQUALITY

45% of global CO₂ emissions produced for 10% of people



33% of global nitrogen 'budget' used to produce meat & dairy for the EU

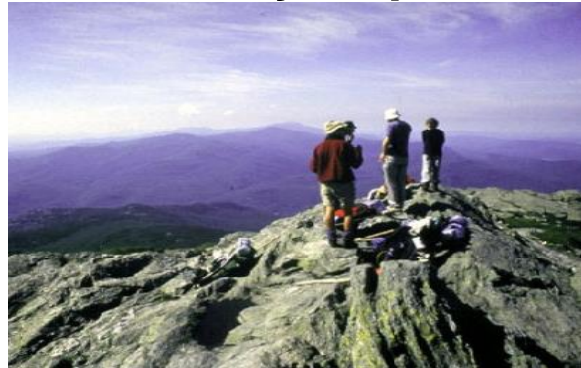
Source: Chancel & Piketty (2015) and European Nitrogen Assessment (2011)

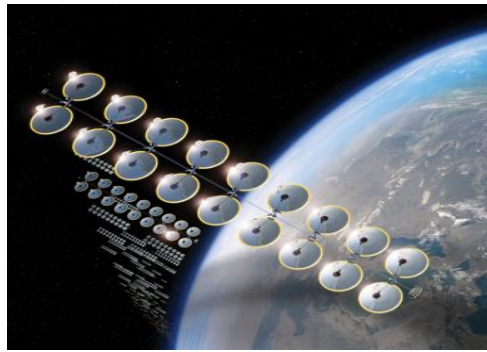


Finding status in what we buy and own

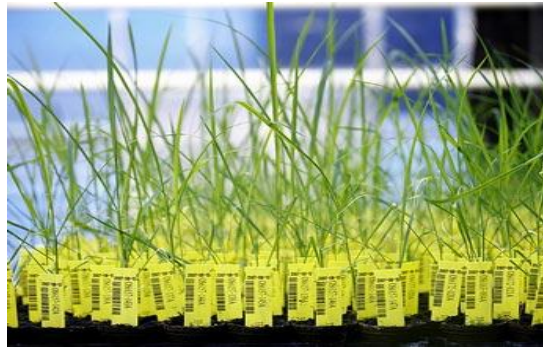
ASPIRATION

Finding meaning in community, experience, and relationships

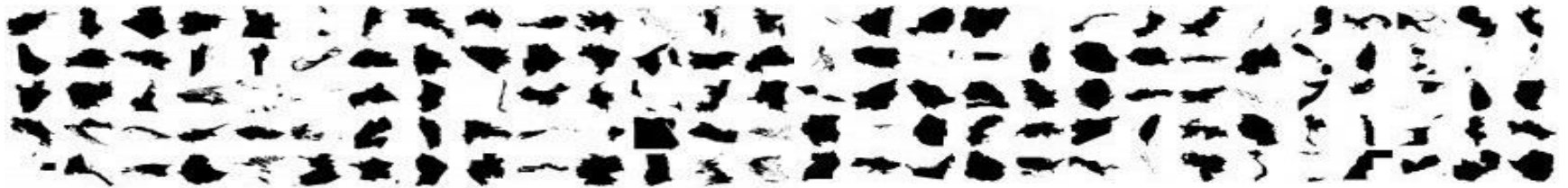




TECHNOLOGY



GOVERNANCE



EDUCATION







Doughnut Economics

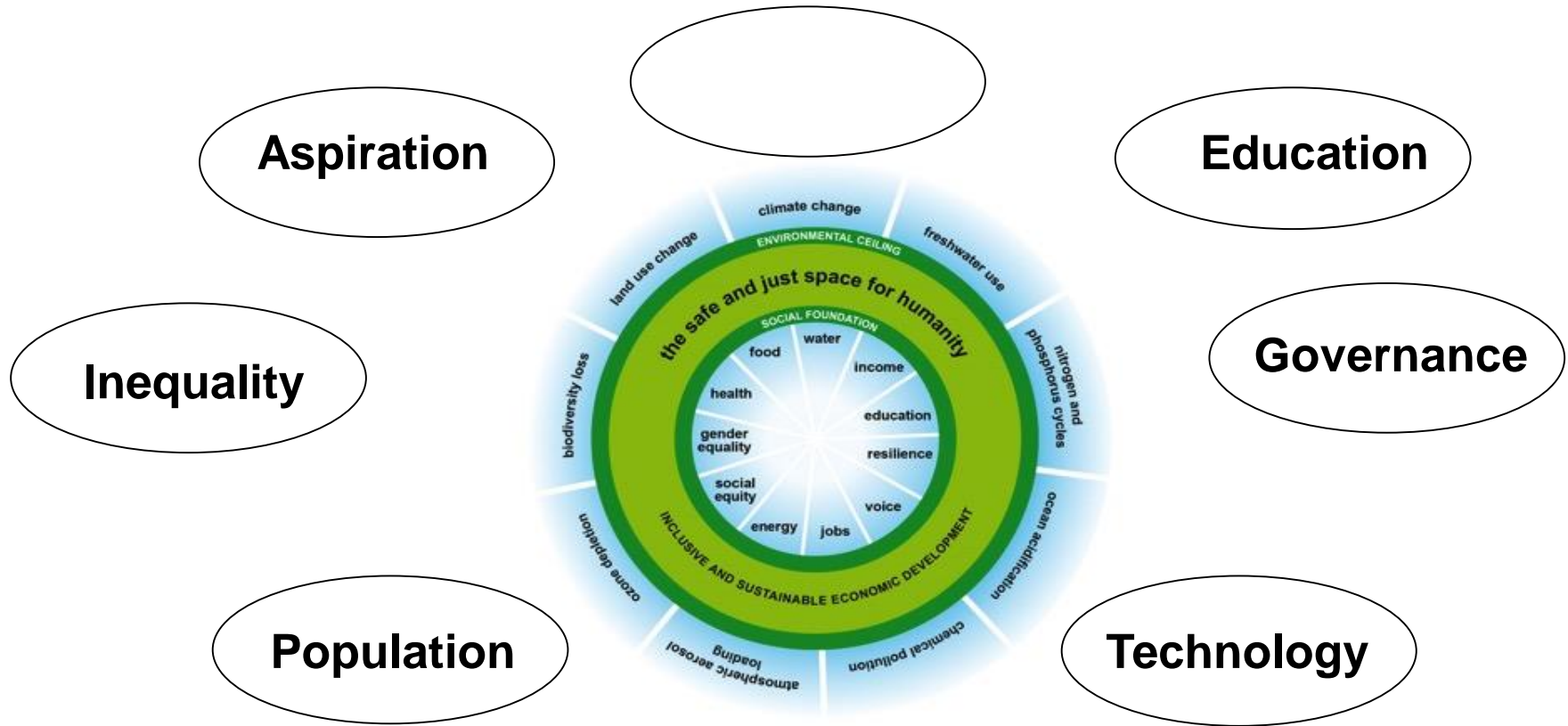
Seven ways to think like a 21st century economist

April 2017



www.kateraworth.com

How can we live within the Doughnut?



@KateRaworth